

SWSS PLATAFORM

DEVELOPED IN THE PROJECT
LIFE SWSS
SMART WATER SUPPLY SYSTEMS

SWSS CONTRIBUTES TO REDUCE
ENERGY CONSUMPTION AND
WATER LOSSES THROUGH A
SMARTER AND MORE EFFICIENT
MANAGEMENT OF WATER SUPPLY
AND TREATMENT SYSTEMS.

This platform increases the efficiency
in the operational management of
systems through the visualization of
information available in real time,
integrated with forecasting and
diagnostic tools.

ENERGETICALLY SMART IN WATER SYSTEMS

LESS COSTS
LESS LOSSES
MORE EFFICIENCY

Smart Water Supply Systems



LIFE I4/ENV/PT/000508

With the contribution of the European Union's LIFE financial instrument

<http://life-swss.eu>



SWSS PLATAFORM

AVAILABLE INFORMATION:

PUMPING STATIONS

Aggregates the energy information, high flow rates and associated costs;
Performance indicators of pumping stations and their comparison.

DELIVERY POINTS

Water consumption forecast, for the next day;
Aggregates information regarding flow rates, consumption and reservoir levels.

LEAKS DETECTION & LOCALIZATION

Automatically and in real time leakage detection in the water supply system;
Upon detection of an anomaly it can locate the most likely site for the rupture.

OPTIMIZATION

Optimized planning of the pumping stations operation;
Optimized Operation Report

EVALUATION

Allows to measure the performance of water supply systems in terms of losses and energy efficiency;
Automatic calculation of water and energy balances and their performance indicators.

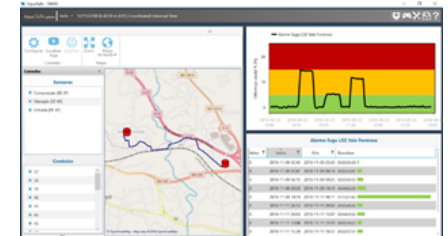
1 - PUMPING STATIONS



2 - DELIVERY POINTS



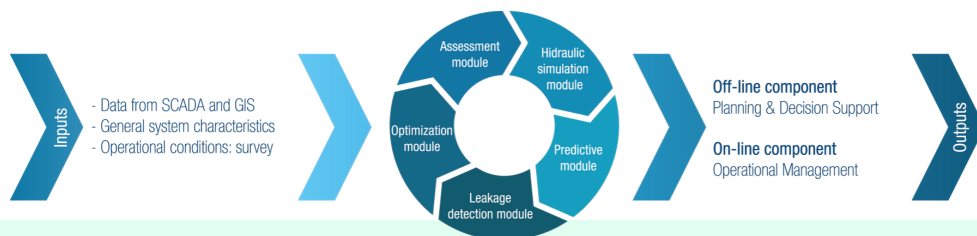
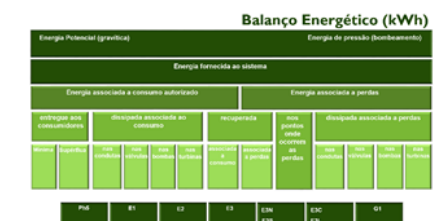
3 - DETECTION & LOCALIZATION



4 - OPTIMIZATION



5 - EVALUATION



INTELLIGENCE SUPPORTS THE WATER MANAGEMENT EFFICIENCY